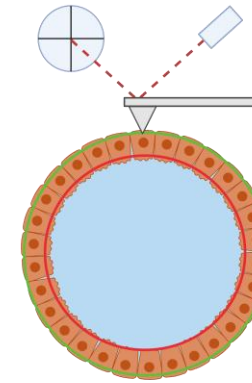
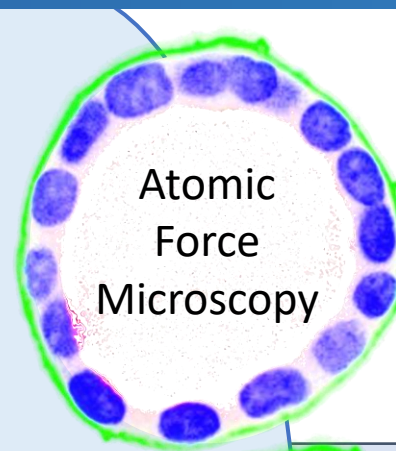


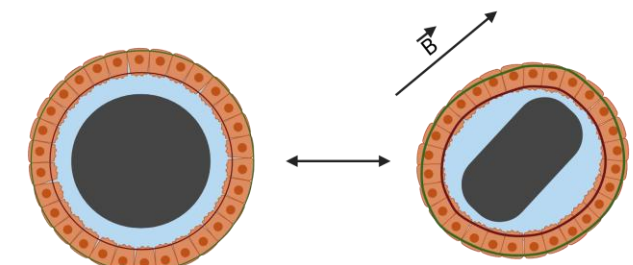
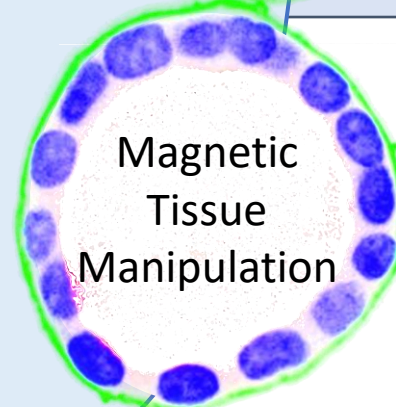
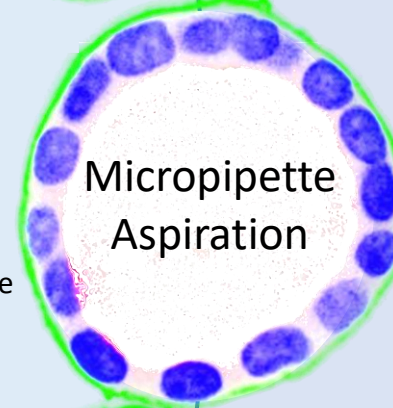
Research question:

Does **mechanical polarity** exist in epithelial cells and if so, how does it arise and depend on functional cell-cell contacts?

- **Mechanical** properties of the **basal cortex** and whole **cysts**
- **Membrane** properties of cysts



Using our model, we can measure the viscoelastic parameter as the **pre-tension T_0** , the **area expansion modulus K_A** and the **fluidity β** of the basal membrane of single cells in cysts.



Inaccessible Basal Cortex under Investigation Inverted Cell Polarity on Cysts

